

X1® Content Connector for Microsoft® Exchange

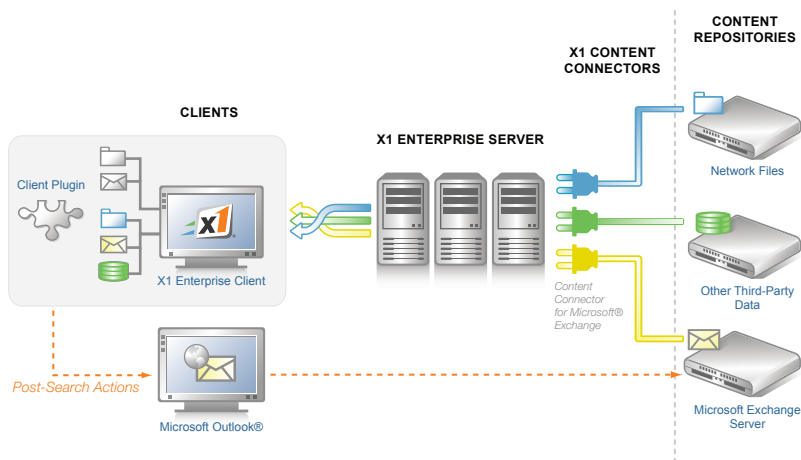
Empowers, Embraces and Extends



Contact us at:
1.866.918.3241
info@x1.com

X1 and Microsoft Exchange: Unified, Secure and Actionable Search for All Exchange Content

The X1 Content Connector for Microsoft Exchange gives users immediate access to any content in their Exchange cluster through the X1 Enterprise Client. X1 enables powerful, unified search capability across Exchange server clusters, local files and local email. Users can search Exchange and receive results federated with search results from local and enterprise server-based content. Through seamless integration with Microsoft Outlook®, users can perform common email functions from inside the X1 interface.



▶ GET RESULTS FOR THE ORGANIZATION AND END USERS

Email is the life-blood of today's enterprise. Sales, marketing, product development, operations and support functions all use email as a primary work environment to do their jobs. While Microsoft Exchange is undeniably a mission-critical application in the enterprise, the sheer volume of email, calendar and task items as well as the passage of time have turned it into a cavernous store from which meaningful data is often difficult to extract.

Through the X1 Content Connector for Microsoft Exchange, the X1 Enterprise Server indexes the contents of one or more Exchange clusters in a secure, scalable and manageable manner. Users can search, filter and sort results based on the full-text contents of Exchange items and metadata fields.

Search results will not be returned for specific content when users do not have access rights to that data, respecting Exchange's built-in security model. Administrators specify which accounts to index as well as what types of Microsoft Exchange items to index, then set indexing schedules to minimize server workload.

The X1 Content Connector for Microsoft Exchange also supports electronic discovery efforts. For example, the corporate counsel receives a subpoena for all electronic correspondence related to a specific issue. For a firm that generates hundreds of thousands or millions of emails monthly, this may represent a major burden. With X1, one user can perform one search, see all relevant results across the company in an instant, and export the emails to a .PST file for reference.

▶ FEATURES AND BENEFITS

The Content Connector extends X1's award-winning search to deliver these benefits to the organization:

- **Individual user mailbox search.** Administrators can centralize their end users' X1 indexing and searching of Exchange to a single, scalable, manageable server platform. Versus client-only search technologies, this platform reduces network load, reduces Exchange server load and scales linearly with your Exchange implementation, while end users can continue to search email, contacts, tasks and calendar items within their own Exchange mailboxes.
- **Public folder indexing.** Exchange public folders are central to many organizations but quickly become enormous, opaque information stores due to the volume of information they contain and the lack of adequate search tools. X1 enables rapid searching across Exchange-based public folders, enabling end users to quickly find what they are looking for.
- **Single, unified, actionable view of all Exchange data across all users.** Email is now accepted as discoverable information in lawsuits and is routinely subpoenaed by opposing counsel. With the X1 platform and the Exchange content connector, companies can respond quickly to legal requests to produce Exchange-based data without sacrificing either their critical IT operations staff or potentially hundreds of thousands of dollars to outsource the discovery function.
- **Simultaneous search of multiple Exchange servers.** X1's clustered, scalable server architecture enables administrators and end users to configure, index and search multiple Exchange server clusters simultaneously.
- **Schedule-based indexing.** Any processing that impacts performance is unacceptable. The Content Connector enables IT managers to control when and how much load is placed against their Exchange server.
- **Integrated installation and management.** The X1 Enterprise Server Manager includes built-in tools to centrally install, configure, monitor and maintain the health of the X1 platform.
- **Active Directory permissions retained.** X1 maps to Active Directory permissions. X1 authenticates and authorizes access and actions using AD Access Control List implementation.

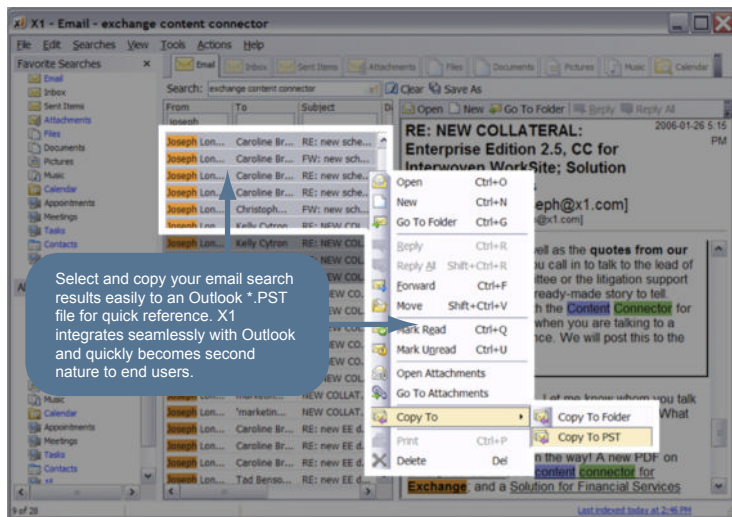
X1® Content Connector for Microsoft® Exchange

Empowers, Embraces and Extends



Contact us at:
1.866.918.3241
info@x1.com

▶ FEATURES AND BENEFITS (continued)



In addition, end users enjoy all the benefits of the X1 Enterprise Client, along with customizable views and post-search actions.

- **Preview search results.** Rather than just seeing a list of links to results, as in other search applications, users can immediately preview the content of any Exchange object, including attachments, in its native format.
- **Real-time searching and search refinement.** Due to X1's search speed across all data types, users can rapidly cull the relevant data items they are seeking through on-the-fly search term augmentation and refinement, allowing them to vastly increase the precision and recall of their searches.
- **Take action on results immediately.** End users enjoy greater productivity because they can instantly act upon results within X1 using Outlook-specific post-search actions, which can be centrally customized and deployed by an administrator.

▶ HOW X1 DOES IT

X1 indexes the content of your Exchange Server using Microsoft's standard for accessing Exchange data, Mail API (MAPI). The X1 server indexes the security information for each item in the Exchange server so that it can respect and enforce Exchange security at the item level. The X1 Enterprise Client communicates with the X1 Enterprise Server over HTTP to run user searches and retrieve results. Results are presented in the X1 Enterprise Client, where the end user can sort, refine, preview and act on the items. Actions on items are executed by making calls from X1 to the local Outlook client on the end user's computer, thus completely respecting and working with the Exchange security model.

▶ DEEP INTEGRATION WITH ENTERPRISE EDITION

The Content Connector for Microsoft Exchange works seamlessly with X1 Enterprise Edition. The X1 Enterprise Server and its related administrative tools provide a scalable, centralized indexing engine, facilitate customization of the Enterprise Client and accelerate deployment throughout the enterprise.

▶ THE X1 PLATFORM

The X1 Content Connector for Microsoft Exchange is one component of the complete X1 Platform, which includes the following benefits for your organization:

- **Empowers.** Accelerate your users' productivity. X1's award-winning user interface lets you instantly locate, review and act upon any information you have access to.
- **Embraces.** Enforce and enhance your information security policies. X1 seamlessly integrates with your existing security and information systems and is easy to deploy and manage.
- **Extends.** Extend your search capabilities across the enterprise, including custom applications, databases and other content repositories, with X1's open architecture. Tailor the user experience by adding business-specific workflow actions.

▶ SPECIFICATIONS AND SYSTEM REQUIREMENTS

X1 Enterprise Server 2.5

Windows® Server 2003 SP1 w/ IIS 6 and Active Directory / Windows Server 2000 SP4 w/ IIS 5 and Active Directory

ASP.NET 2.0

1 CPU required, 2 CPU recommended*

1 GB RAM required, 2 GB RAM recommended*

20 GB free hard disk required, 2 or more hard drives per server recommended*

* Note: Actual memory and space used is highly dependent on the components running on each node in the cluster, the number of files indexed, and the number of users accessing the system. See the X1 Enterprise Server documentation for details on properly sizing your implementation or contact X1 directly.

X1 Content Connector for Microsoft Exchange

X1 Enterprise Server 2.5.2 or later

Windows® Server 2003, 2000

- Membership in Active Directory domain
- IIS 6 services enabled

Microsoft Exchange Server 2000 or 2003

Microsoft Outlook Client 2000, 2002 or 2003

Microsoft, Outlook, and Windows are either registered trademarks or trademarks of Microsoft Corporation in the United States and/or other countries.